



AI TOOLS AND THEIR USES FOR EDUCATORS

DR. CHRIS FULTON
E-LEARNING TECHNOLOGY OFFICER (CTLE)

RUNDOWN

3 key themes identified from a convenient survey of T&L websites:

1. AI has **inspired** teachers
2. Issues with policies on academic **integrity**
3. Teachers can benefit by redesigning **assessment** activities

Which AI tools might be most relevant to us?

1. Small group discussion
2. Examples of **assessment** with AI

INSPIRE

Practical AI for Instructors and Students Part 1: Introduction to AI for Teachers and Students

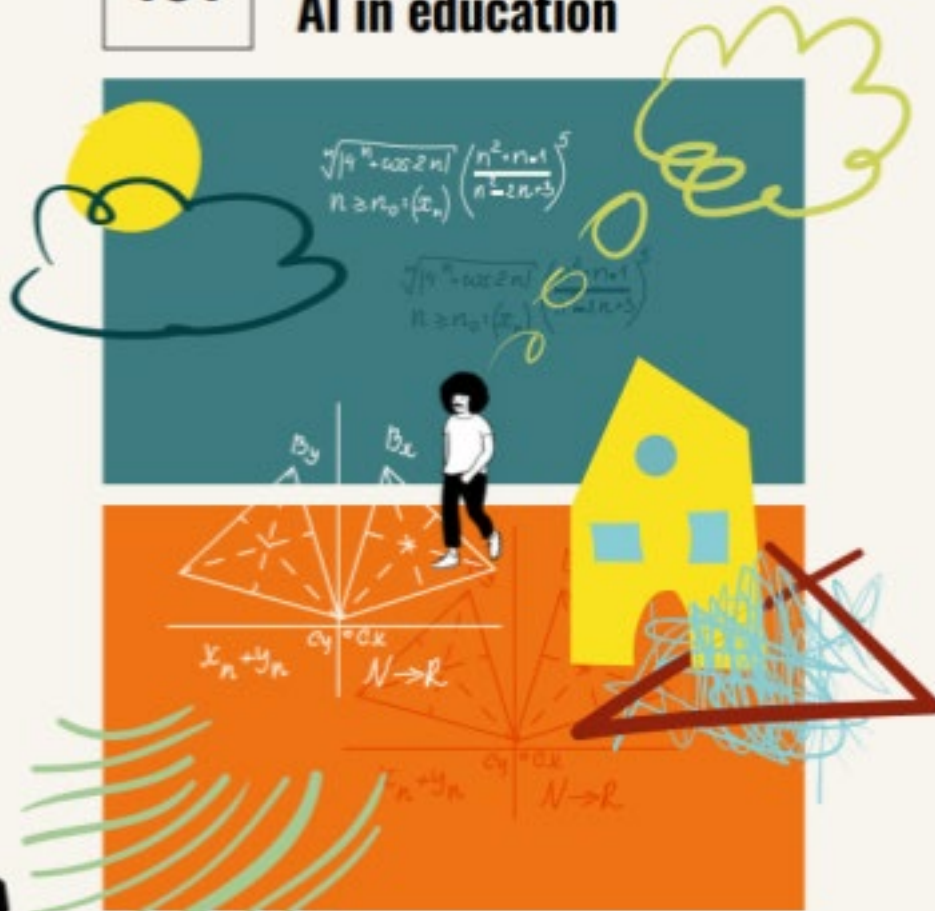
- Ethan Mollick, Co-Founder and Faculty Director at Wharton Interactive, The University of Pennsylvania.
- Lilach Mollick. Director of Pedagogy at Wharton Interactive, The University of Pennsylvania.
- <https://youtu.be/t9gmyvf7JYo>, 2-minute clip



- Note the uses of AI and any implications

101

Creative ideas to use AI in education



A crowdsourced collection

Edited by Chrissi Nerantzi, Sandra Abegglen, Marianna Karatsiori & Antonio Martinez-Arbeleda

INSPIRE

Generative AI tools offer opportunities to transform teaching.

“100+ Creative ideas to use AI in Education” ([Indiana University Center for Innovative Teaching and Learning](#), n.d.; [Nerantzi et al.](#), 2023)

ChatGPT: Wolf in sheep's clothing conversation starter

Author: Maha Bali

Contact details: bali@aucegypt.edu, @bali_maha

Role: Educational developer/educator

Institution/organisation: American University in Cairo

My idea: Use the meme I made to start conversation about unethical practices in ChatGPT's process of creating an ethical AI (exploitation of Kenyan workers).

Context: [Time magazine article on exploitation of Kenyan workers](#)

What I am aiming to achieve: I am aiming for students to do the research and find the above article or something like it or all the ethical issues connected to AI or ChatGPT.

Where the inspiration comes from: That article above and also [Autumm Caines](#) and [Chris Gilliard and Pete Rorabaugh's article](#).

Tool used: Just a place to share the image with students.

Wolf in Sheep's clothing is a good metaphor for ChatGPT's unethical practices in the process of creating "ethical AI"



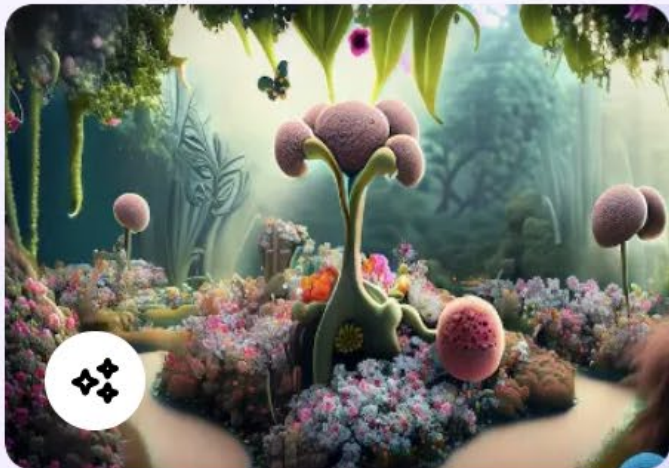
Image edited by Maha Bali on Canva

Original image by Sarah Richter on Pixabay:
<https://pixabay.com/photos/wolf-in-sheep-clothing-wolf-sheep-257813/>

CC-BY Photo of wolf head in sheep body with text on it being a metaphor for unethical practices by ChatGPT: edited by Maha Bali on Canva. Original without text by [Sarah Richter on Pixabay](#)

Create fast with generative AI and one-click quick actions.

Generative AI features powered by Adobe Firefly and one-click tasks for videos, photos, and PDFs.



Text to image

Try describing things, environments,
people, moods. (English only)

Generate



Text effects

My personal ChatGPT support tutor

Author: Chrissi Nerantzi

Contact details: c.nerantzi@leeds.ac.uk

Role: Educator

Institution/organisation: School of Education, University of Leeds

My idea: Introduce the possibility of getting additional support when needed while studying to answer questions around time - and task-management, assessment and other areas that are perhaps less complex outside a traditional tutorial with a personal tutor.

Context: This approach could be used for higher education students who work autonomously or have a personal tutor but could resolve some of the questions they may have with this ChatGPT support tutor.

What I am aiming to achieve: To develop awareness of self-support strategies that are available outside personal tutoring and free up time to work with the personal tutor on more complex issues the student needs help with and can't resolve on their own.

Where the inspiration comes from: This idea based on Interviewing learner personas contributed to this collection by Rebecca J. Hogue.

Tool used: [ChatGPT](#)

Choose a conversation style

More
Creative

More
Balanced

More
Precise

Welcome back! What would you like to chat about?



Generate page summary

Ask me anything...



0/4000



I am a university student and I need to pass an exam on macroeconomics in two weeks time. what would be a good way to prepare? Provide a weekly study plan.

- ✓ Searching for: weekly study plan for macroeconomics exam
- ✓ Generating answers



A good way to prepare for your exam on macroeconomics is to follow a weekly study plan that covers the main topics and skills that you need to master. Here is a possible study plan that you can use or modify according to your needs:

- Week 1: Review the basic economic concepts and the production possibilities curve model. These are the foundations of macroeconomics and will help you understand the rest of the course. You can use your lecture notes, textbooks, or online resources to refresh your memory. For example, you can

COMMUNICATE

1. UPDATE COURSE/ASSIGNMENT INSTRUCTIONS TO ADDRESS APPROPRIATE USE OF AI TOOLS,

- FOCUSING ON POSITIVE FRAMING AND LEARNING BENEFITS (**CREATE A STUDY PLAN**).

2. REVISE ONE'S PEDAGOGY; MORE EFFECTIVE THAN POLICING

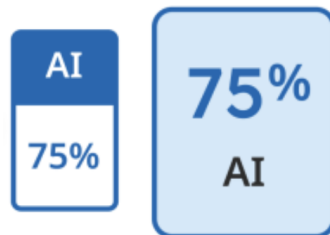
- **ACADEMIC MISCONDUCT PROCEDURES ARE STILL RELEVANT IF NEEDED.**

(INDIANA UNIVERSITY CENTER FOR INNOVATIVE TEACHING AND LEARNING, N.D.; MACDERMOTT, 2023; STANFORD TEACHING COMMONS B, 2023)

TURNITIN AI WRITING DETECTION

The AI writing indicator

When you open a Similarity Report, the AI writing indicator is in the side panel. A



Blue with a percentage between 0 and 1 writing detection model determines was considered long-form prose text, it will r

Our testing has found that there is a high display an asterisk (*) for percentages be

To explore the results of the AI writing d Report. If you have a pop-up blocker ins

The submission needs to meet the following requirements:

- File size must be less than 100 MB
- File must have at least 300 words of prose text in a long-form writing format
- File must not exceed 15,000 words
- File must be written in English
- Accepted file types: .docx, .pdf, .txt, .rtf

<https://help.turnitin.com/ai-writing-detection.htm>

TURNITIN AI WRITING DETECTION

ICTO Help Desk / FAQs

[How to create Turnitin assignment in UMMoodle?](#)

Add an activity or resource ×

- Survey
- Team Builder
- Turnitin Assignment 2
- Wiki
- Workshop
- Zoom meeting

RESOURCES

- Book
- File

Creates a Turnitin Moodle Direct assignment which links an activity in Moodle to an assignment / assignments on Turnitin. Once linked, the activity allows instructors to assess and provide feedback for student's written work using the assessment tools available within Turnitin's Document Viewer.

Please kindly see "[Turnitin Moodle Update](#)" for more information.

INEFFECTIVE PRACTICES &
POLICING?

- **Essays**
- Tool for detecting AI generated text, “**AI-gerism**”
 - **Turnitin** in UMMoodle (currently works with *some* AI-generated texts, i.e., ChatGPT 3.5)
 - Is it **ethical** considering the high # of false positives? E.g. translated text Baidu, DeepL, Grammarly, etc.

ACTIVITY (IN PAIRS)

BRAINSTORM TWO ACTIVITIES WITH AI TOOLS FOR STUDENTS IN YOUR DISCIPLINE

Acceptable uses of AI assistance (private tutor):

- Letters of recommendation
- Developing a study plan

Unacceptable uses of AI assistance:

- Completing unfinished portions of an assignment
- Rewriting significant portions of a text

4-MINUTES



Advice:

Assignment design is key to make AI text less useful.

- Make questions/task specific,
- Require personal connections,
- Break into stages,
- Eliciting student thinking,
- Give feedback, and require revisions,

([Stanford Teaching Commons](#) b, 2023; Hendriksen, 2023)

Instructors can explore beneficial uses like developing teaching materials, e.g., **low-stakes quizzes**;

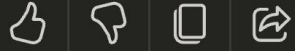
3 Quiz tools

1. Bing
2. Claude 2
3. Questgen

Make a multiple choice question about Chongqing City.

✓ Searching for: **Chongqing facts**

✓ Generating an



Here is a multiple choice question I made about Chongqing City:

What is the meaning of Chongqing's name in Chinese?

- A) City of Mountains
- B) City of Rivers
- C) City of Double Joy
- D) City of Spicy Food

Bing can also be used to create quiz questions from web pages. [[video](#)]

bing.com/chat → Edge browser or app

TXT

paste.txt
88.90 KB

CF

Here are 5 multiple choice questions about the text:

1. Which of the following is a key capability of ChatGPT and Bing according to the text?
 - a) Producing completely accurate information
 - b) Integrating internet searches into responses
 - c) Understanding natural language requests
 - d) Accessing paywalled journal articles

2. What does the author identify as one of the main challenges facing students using AI tools like ChatGPT and Bing?
 - a) Determining how to use the tools productively
 - b) Avoiding cheating or plagiarism
 - c) Paying for access to the tools
 - d) Understanding the hype surrounding the tools

CLAUDE 2

Rewrite question 1 to ask about only Bing.

Here is question 1 rewritten to ask **only about Bing**:

1. Which of the following is a key capability of **Bing** according to the text?
 - a) Producing completely accurate information
 - b) Integrating internet searches into responses**
 - c) Understanding natural language requests
 - d) Accessing paywalled journal articles

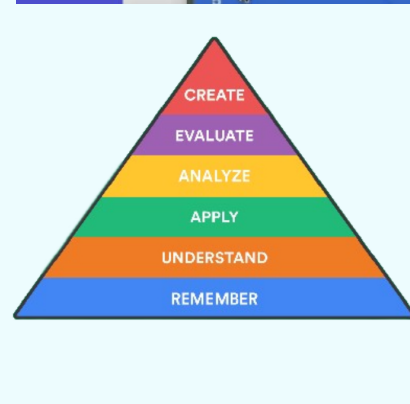
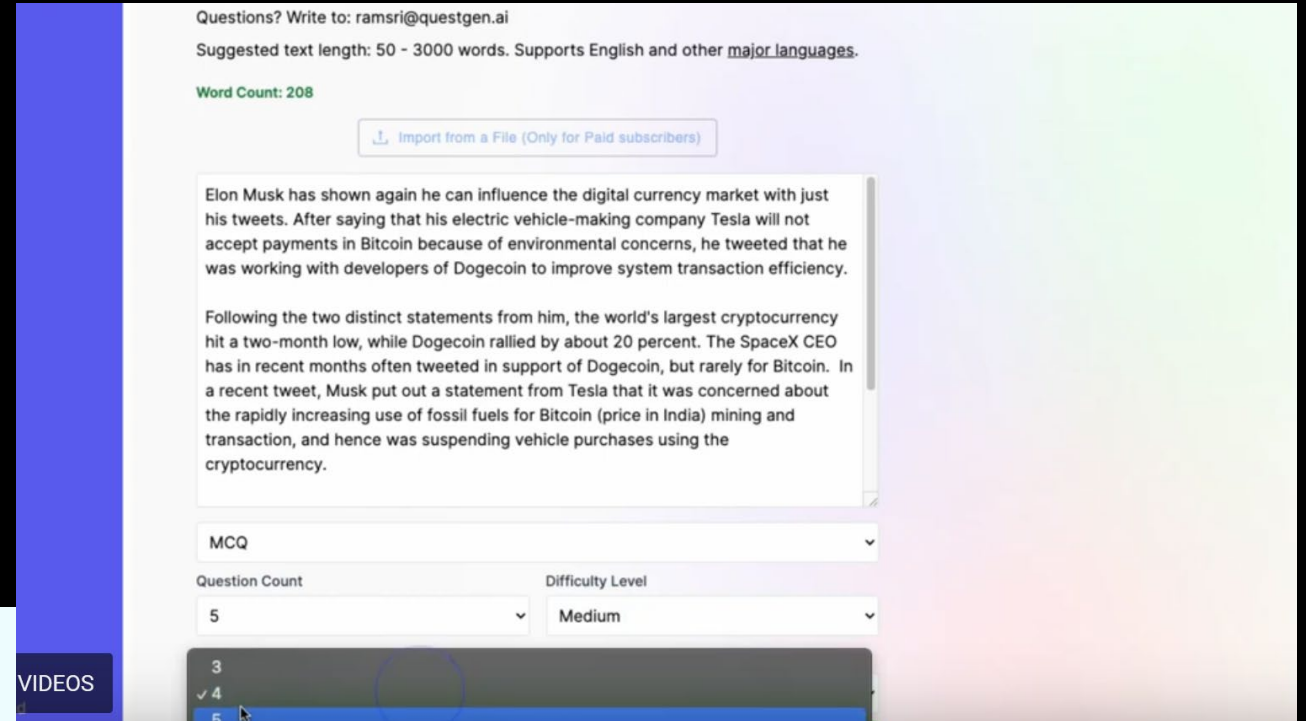
CLAUDE 2

Questgen

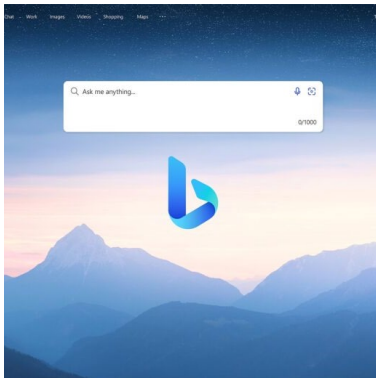
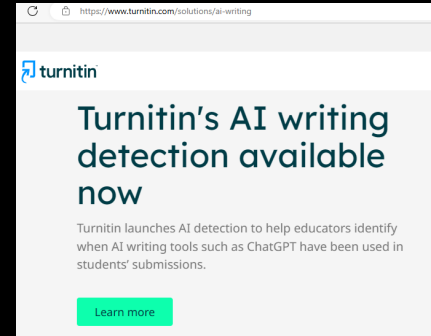
1. generates multiple-choice, short-answer questions based on a text,
2. **Can import Qs into Moodle**
3. **Questions most likely need revisions, testing, but still a good starting point**

Generate Bloom's Taxonomy quiz questions from any text in one click using AI.

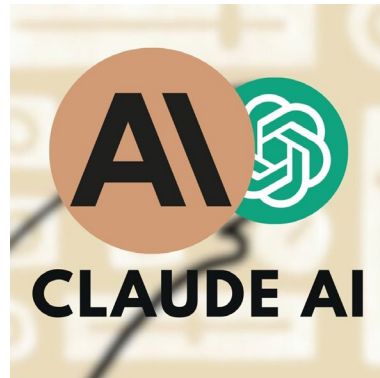
Say goodbye to time-consuming quiz creation and say hello to efficient assessments with Questgen. Create quiz questions on six levels of Bloom's Taxonomy from any text using AI.



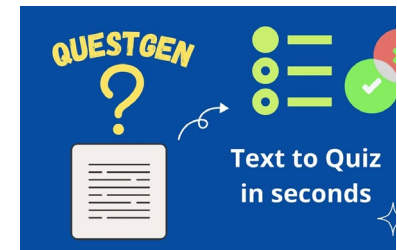
5 AI TOOLS



[Bing.com/chat](https://bing.com/chat)



Adobe Express



SOURCES

Center for Transformative Teaching. (n.d.). AI-Generated Text in the Classroom. University of Nebraska-Lincoln.

<https://teaching.unl.edu/resources/strategies-techniques/teaching-technology/ai-gen-classroom/>

Foltynek, T., Bjelobaba, S., Glendinning, I. et al. ENAI Recommendations on the ethical use of Artificial Intelligence in Education. *Int J Educ Integr* 19, 12 (2023).

<https://doi.org/10.1007/s40979-023-00133-4>

Hendriksen, C. (2023). ChatGPT and Bing: A practical guide. Google Docs.

<https://docs.google.com/document/d/15CwNGJ9tPWJz826WYHd6ueVGIWN19UBGbqqKuARIm8o>

Indiana University Center for Innovative Teaching and Learning. (n.d.). Academic integrity and AI-generated text. Indiana University. Retrieved August 25, 2023, from

<https://citl.indiana.edu/teaching-resources/academic-integrity/AI-Generated%20Text.html>

MacDermott, H. (2023, August 17). Thinking about updating your syllabus for ChatGPT? Academic Technologies, Washington and Lee University. <https://academic.wlu.edu/2023/08/17/thinking-about-updating-your-syllabus-for-chatgpt/>

Nerantzi, C., Abegglen, S., Karatsiori, M., & Martinez-Arboleda, A. (Eds.). (2023, March). 101 Creative ideas to use AI in education. #creativeHE.

<https://creativehecommunity.wordpress.com/2023/02/02/creating-a-collection-of-101-creative-ideas-to-use-ai-in-education>

Roose, K. (2023, August 24). How Schools Can Survive, and Maybe Even Thrive, With AI This Fall. *The New York Times*.

<https://www.nytimes.com/2023/08/24/technology/how-schools-can-survive-and-maybe-even-thrive-with-ai-this-fall.html>

Searle Center for Advancing Teaching and Learning. (n.d.). A heuristic for designing learning experiences with generative AI. Northwestern University. Retrieved from

<https://searle.northwestern.edu/resources/our-tools-guides/learning-teaching-guides/generative-ai-heuristic.html>

Stanford Teaching Commons a. (2023, June 19). Pedagogic strategies for adapting to generative AI chatbots.

<https://teachingcommons.stanford.edu/news/pedagogic-strategies-adapting-generative-ai-chatbots>

Stanford Teaching Commons b. (2023, April 21). AI Tools in Teaching and Learning.

<https://teachingcommons.stanford.edu/news/ai-tools-teaching-and-learning>